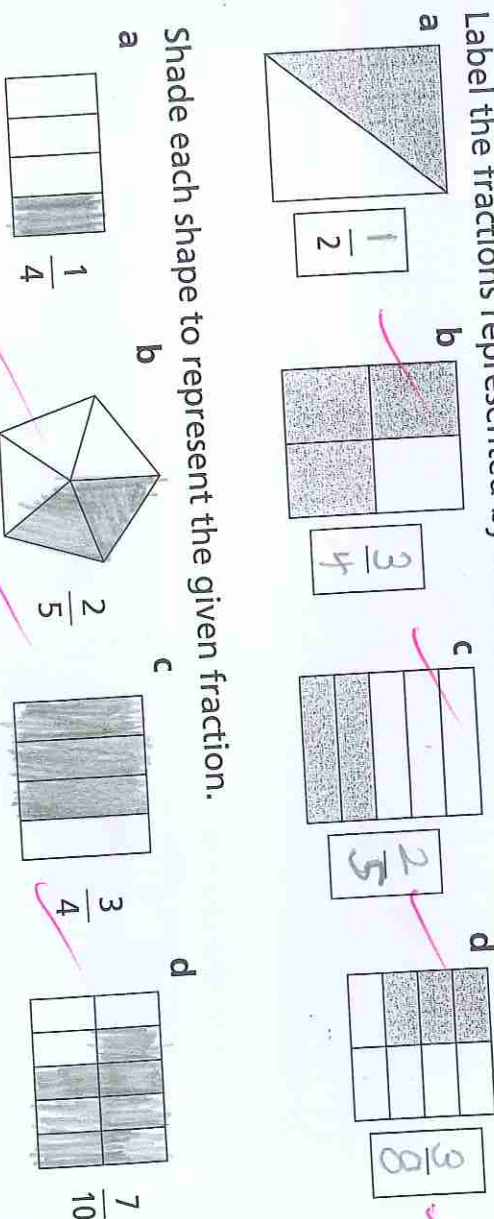
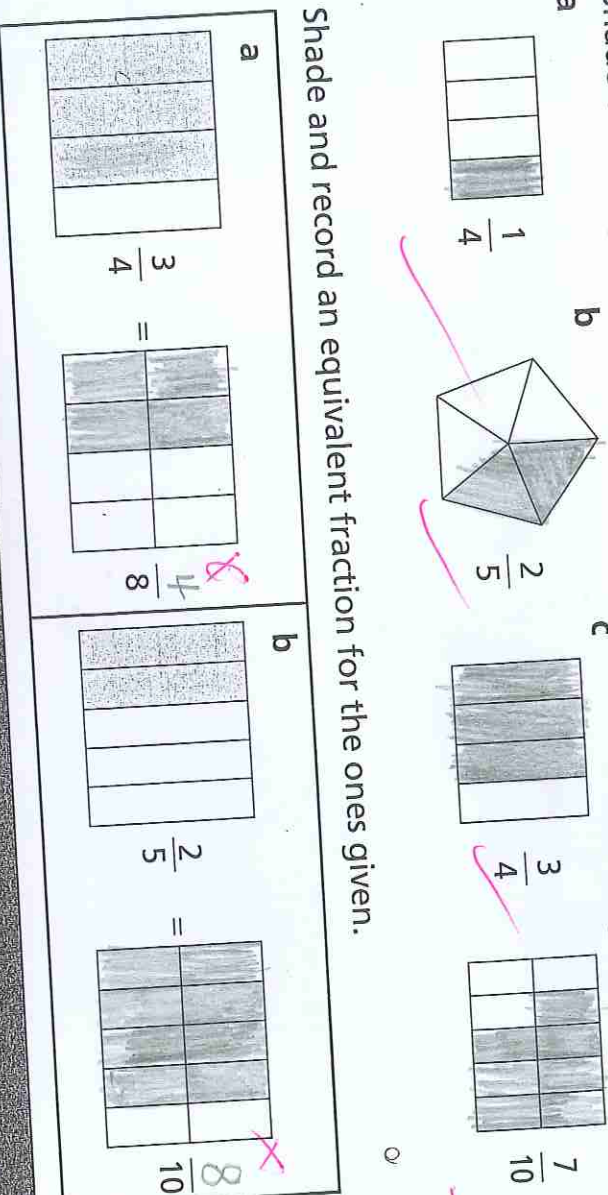


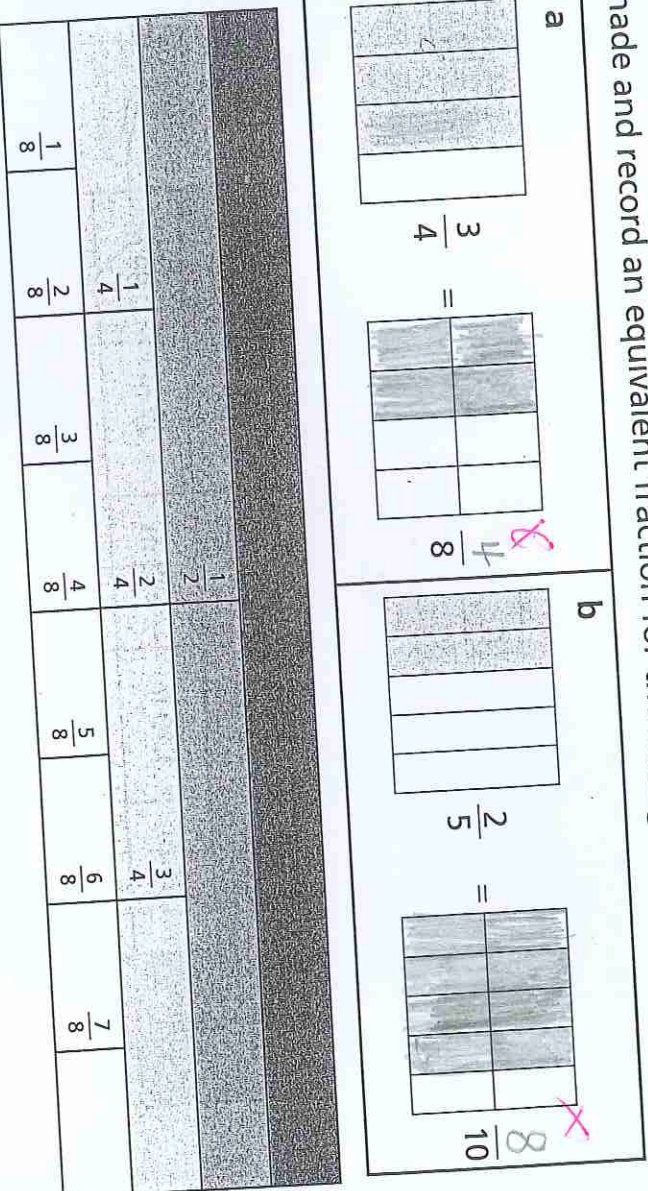
1 Label the fractions represented by the shaded part of each shape.



2 Shade each shape to represent the given fraction.



3 Shade and record an equivalent fraction for the ones given.



4 Use the table to compare the fractions. Write true or false.

- a $\frac{1}{2}$ is smaller than $\frac{1}{4}$ true x b $\frac{3}{8}$ is larger than $\frac{1}{4}$ true ✓
- c $\frac{1}{2}$ is the same as $\frac{4}{8}$ false x d $\frac{5}{8}$ is smaller than $\frac{1}{2}$ false ✓
- e $\frac{7}{8}$ is larger than $\frac{3}{4}$ true x f $\frac{3}{4}$ is the same as $\frac{6}{8}$ false x

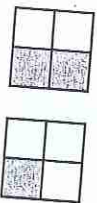



Fractions and Decimals

Name Chloe.f
Class 3a Date 7/10/10

Progression Points
2.25 Use of fractions with numerators other than one; for example, $\frac{3}{4}$ of a block of chocolate.
2.5 Development and use of fraction notation and recognition of equivalent fractions such as $\frac{1}{2} = \frac{4}{8}$, including the ordering of fractions using physical models.
2.75 Add and subtract simple common fractions with the assistance of physical models. Write equivalent fractions and decimals, e.g. $\frac{1}{10} = 0.1$.
3.0 Use of place value to determine the size and order of decimals to hundredths.
3.0+ Vertically add and subtract like fractions.

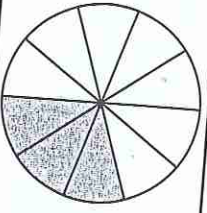
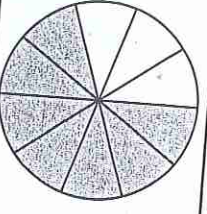
2.75

5 Add the fractions. The models may help you.

a  b  c  d 

$\frac{1}{4} + \frac{2}{4} = \frac{3}{4}$ $\frac{2}{5} + \frac{2}{5} = \frac{4}{5}$ $\frac{1}{5} + \frac{2}{5} = \frac{3}{5}$ $\frac{5}{8} + \frac{2}{8} = \frac{7}{8}$

6 Record the shaded part of each pizza as a fraction and a decimal.

a  b 

Fraction $\frac{3}{10}$ Fraction $\frac{3}{10}$
Decimal $3 \cdot 10$ Decimal $\frac{3}{10}$

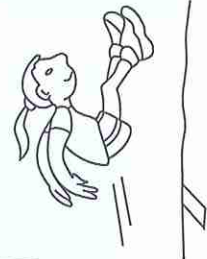
3.0

7 Write each fraction as a decimal.

a $\frac{27}{100} = 0.$ b $\frac{74}{100} = 0.$ c $\frac{8}{10} = 0.$ d $\frac{7}{10} = 0.$

8 Place the athletes from first to fifth according to how far they jumped in the long jump competition.

Name	Jaime	Renee	Helga	Adele	Rema
Jump	1.25 m	1.19 m	1.32 m	1.27 m	0.99 m
Place	Helga	Adele	Jaime	Renee	Rema



3.0+

9a Put a cross on the number in the thousandths place.
9b Circle the number in the tens place.

3528.564

10 Add these fractions in your head and write the answers.

a $\frac{1}{2} + \frac{1}{8} = 12$ b $\frac{3}{5} + \frac{3}{10} = 21$ c $\frac{3}{4} + \frac{5}{8} = \frac{8}{12}$